

SUMMARY

Business process servers with local storage have been typically used to store data locally and provide fast response time demanded in financial industry. But this practice posed challenges of data synchronization between distributed servers and complex management of the systems that are operating locally.

Kibo, a financial institute in Korea, wanted to store data centrally to reduce the cost of local operation including people in remote offices. At the same time, it wanted that this new approach would not affect the response time, which is the most critical performance parameter.

AMS Korea built WAN accelerator solution that enable efficient management of the data centrally while maintaining fast response for business transactions.

CHALLENGES

Local cache is a good way to improve response time in business transactions.

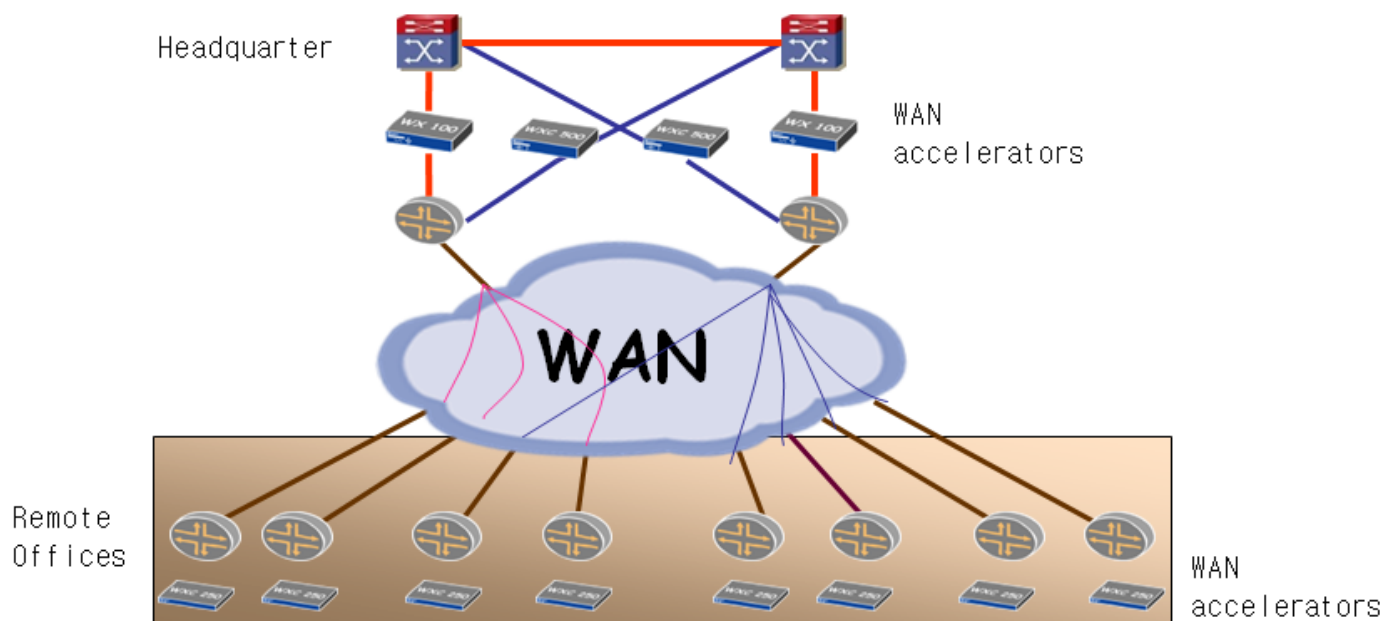
File-linked cache is a typical way to implement distributed cache but this approach requests transfer of whole file even if there is a small change.

Centralized data management can be an alternative because more complex and high-performance systems can be easily and efficiently managed. But response time can be a challenge for this approach.

SOLUTIONS

WAN acceleration solution implements caching in more granular way so that traffic for data synchronization can be minimized. This approach can simplify systems requested locally and reduce the cost of local IT operation.

In the following diagram, intelligence caching is enabled between WAN accelerators installed in both headquarter and remote sites. This intelligence caching enables transfer of smaller data only reflecting changes but provides fast response time.





BENEFITS

The customer can simply data synchronization issues for caching deployment and maintain fast response time with minimized data transfer. This can results in reduction of circuit charge and operation complexity in remote offices.

CUSTOMER INFORMATION

Kibo is a financial institute which evaluates technical capabilities of a company and issues a financial certificate. Based on such certificate, companies can get financial supports such as loans from financial institutions.